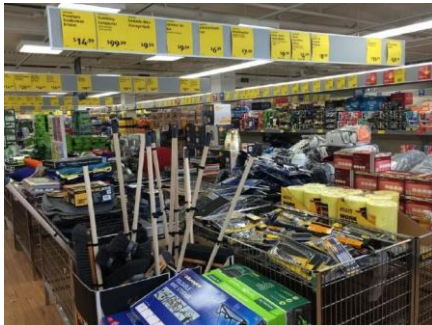


HAZARDS 2018

Why is transparency in the supply chain necessary in advancing the health, safety and welfare of workers both nationally and internationally?



15,000 suppliers in 40 countries

Global chains employ millions indirectly

- 80% global trade is linked to the international production networks of MNE
- 453 million global supply chain-related jobs in 2013 (40 countries)
- Example: H&M, employs 132,000 in design, sourcing and marketing globally. In Bangladesh alone, 400,000 workers in nearly 300 supplier factories

Bangladesh	
Factory Name	Factory Address
Epic Garments Manufacturing Co Ltd	Plot 11-22 26-34Adamjee EPZ Siddirgonj
PEARL GARMENTS CO LTD	PALASHBARI NABINAGARASHULIA SAVAR
Evitex fashions Limited	VIII- Shirir Chala, P.O. : Bhabanipur, P.S : Joydevpur, Gazipur, Bangladesh
Bedgetex Apparels Limited	P/6 - A , Mohora , Nexus I/A . Changaon, Chittagong, Bangladesh
Four H Lingerie	BRIC Bus Depot Baluchara, Chittagong
Regency Three Limited	Plot # 13-18, Sector # 8, CEPZPlot # 13-18, Sector # 8, CEPZ
Interstoff Apparels Limited	Pollibiddut Bus Stand Chandra,
Aboni Knitwear Ltd	169-171 Hemayetpur, Savar, Dhaka-3400
Aman Graphic & Design Ltd	Nazim nagar, HemayetpurSavar, Dhaka
Aman Fashions & Designs Ltd.	Nalam, Mirzanagar, Asulia, Savar, DhakaNalam, Mirzanagar, Asulia, Savar, Dhaka
Aman Sweaters Ltd	Rajaghat Road, Rajfulbaria, Savar,
YASIN KNITEX IND LTD	South panishail BKSP Zirani Bazar
Essential Clothing Limited	AKULICHALA, SAKASHORMADDHA PARA,KALIAKOIR

UK Legislation

• Section 54 : Modern Slavery Act 2015

Statement for commercial organisation in any sector – goods & services – carrying on a business or part of a business in the UK

- ‘what steps the organisation has taken during the financial year to ensure that slavery and human trafficking is not taking place in any of its supply chains and in any part of its own business’

Legislation

- Modern Slavery Act 2015 – 13,000-15,000 companies have to report
- Australia Modern Slavery Act – coming
- French due diligence law